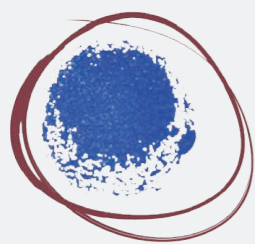
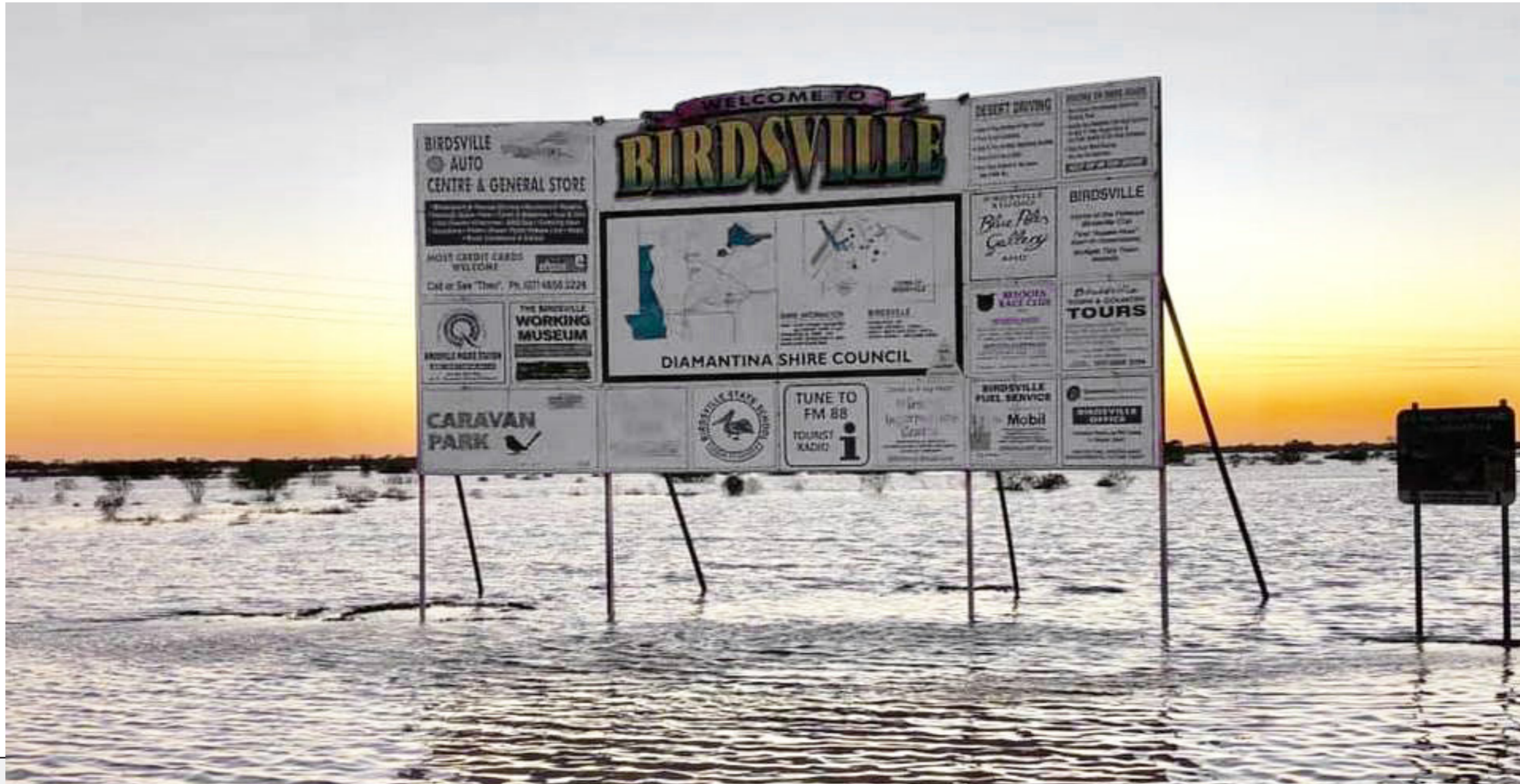


BIRDSVILLE LANDSCAPE MASTER PLANNING PACKAGE

Town Hall | Jardine Park | Anzac Park



anembo

Anembo Consultants Pty Ltd

Anembo Consultants Pty Ltd.
team@anembo.com
www.anembo.com



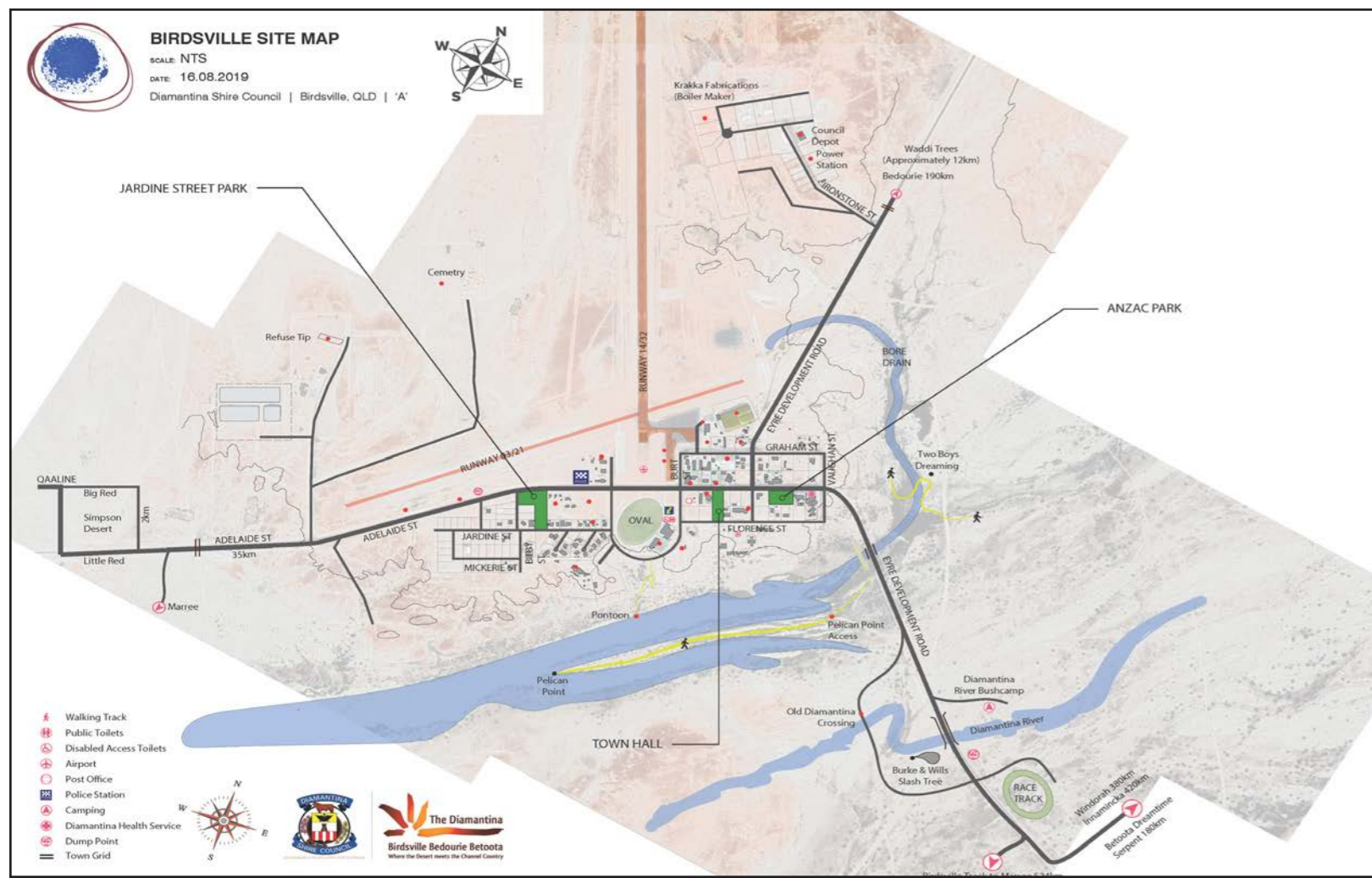
SUSTAINABLY DEVELOPING THE OUTBACK

Client
Diamantina Shire Council

Project
Birdsville, QLD

Date
22/10/2019

Issue
'B'



MAP 1 - BIRDSVILLE SITE MAP

BIRDSVILLE REPORT - Diamantina Shire Council (DSC) has engaged Anembo Consultants Pty. Ltd. to provide three (3) master plans for council-controlled sites located in the town of Birdsville.

The sites include:

- Birdsville Hall Precinct, 61 Adelaide Street & 60 Florence St
- Anzac Park, 39-43 Adelaide Street
- Jardine Street Park, 22-24 Jardine Street

The master plans will guide the sustainable long-term development of these sites and provide a framework for new works and future upgrades. The plans are concise, clear and logically structured, and most importantly financially achievable, and sustainable.

The master plans;

1. Reflect the findings and outcomes of engagement with community stakeholders.
2. Incorporate, where appropriate, existing park infrastructure and uses,
3. Utilizes availability of utilities (water, sewer, power)
4. And most importantly reflect the strategic role the parks will play in the delivery of council's vision.

To orientate readers of the report the above town map (Map 1 – Birdsville Site Map) show the townscape and context of ANZAC park, Town Hall Precinct and Jardine St Park as well as the open space associated with Jardine St, the billabong and Wirrarri Recreation precinct.

LISTENING PROGRAM - Listening and respect for all views is a key ethic for our community engagement to lay the platform for the development of trust in the honesty of the final master plan design. The consultant team worked with DSC officers to undertake stakeholder engagement on key elements of the master plans. The Consultant was on site from 22nd to the 26th April to inspect the sites and interview stakeholders present in town that week.

Original stakeholder groups were identified as:

- Birdsville State School
- Birdsville State School P&C
- Birdsville Police
- Council officers
- Councilors
- Birdsville Social Club
- Betoota Social Club
- Residents
- Businesses
- Birdsville Playgroup
- Birdsville Race Club
- Big Red Bash
- Local Native Title Holder representatives



A general community meeting opportunity was held at the Wirrarri Visitors Information Centre for two hours on 24.04.2019.

The purpose of stakeholder engagement is to include public opinions in any future design process for the Birdsville township. Therefore, the public's opinions were summarized into Key Master Plan Design Elements brief which then informed the design outcomes.

This approach provides ongoing development decision making transparency because as issues occur, and priorities change due to the dynamics of community evolution, the DSC as custodians of the process can review and amend as required the planning and design brief for each future stage of the town's landscapes development.

In accordance with good practice and DSC brief each master plan design element has then been reviewed against the following criteria:

Place making, environmental and climate condition, universal access, relevant regulations and standards, sustainability, Parking and traffic, signage, – existing and proposed infrastructure, pedestrian / cyclist movement and linkages to other places. This has enabled the clarification and finalization of the discussions and considerations component of the final design.

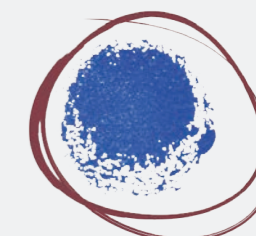
Birdsville's isolation and climate impose particular constraints on procurement of materials, skills and labor. These constraints then impact on project costs and timeframes. Therefore, the following recommendations have been considered against the reality of remoteness and the harsh environmental conditions:

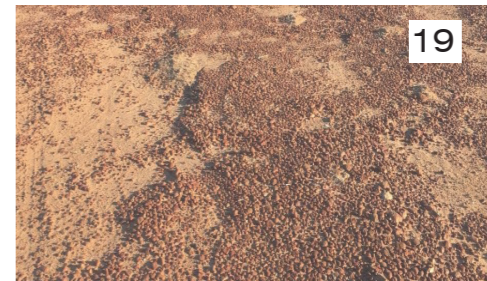
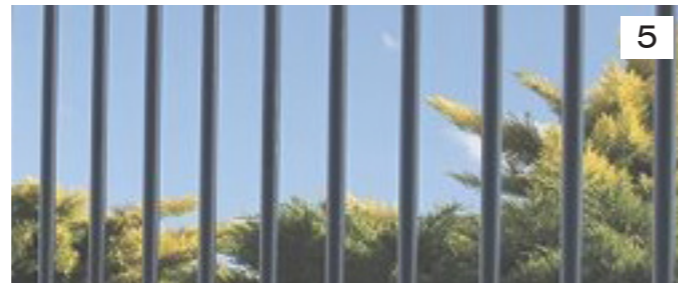
- Upgrade landscape maintenance workshop facility
- Develop landscape Budgets - Inc' capital works, maintenance and lifecycle upgrades to 2040
- A DTM survey of all Birdsville township street and park infrastructure be undertaken
- Major upgrade of township irrigation system with centralized computer management systems
- Street tree plan and pedestrian network for township
- Upgrade southern and western entries to town
- Confirm township 'large event plan' describing parking, camping major paths and so forth
- Maximize small group and family tourist experiences particularly for shoulder & summer Seasons
- Introduce WIFI capability to key parks

BIRDSVILLE LANDSCAPE MASTER PLANNING Birdsville Analysis

PAGE No. 2 Date 13.09.2019

Diamantina Shire Council | Birdsville, QLD | 'A'





LANDSCAPE INFRASTRUCTURE AND MATERIALS:

- Local materials are preferred over imported.
- Local materials include: white rocks in boulder sizes, white and red rock gravels, river sands, bush mulch, demolition timbers and steel. Scope to be confirmed by DSC Landscape office.
- Identification of key imported materials and level of stock to be retained at the DSC landscape compound.
- Imported materials include: specialised soils and mulches, playground soft fall, timber, stone and steel garden edging, subsurface drains, irrigation, concrete materials, pavers, plants, garden stakes & fencing. Scope to be confirmed by DSC Landscape office.
- Identification and budget for key park infrastructure items including: shelters, seats, tables, bbq, bins, pergolas, exercise and play equipment



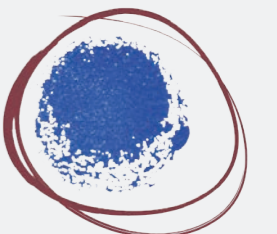
INFRASTRUCTURE

1. Corten Steel Planter Box
2. Table Setting w/ Wheel Chair Accessible End
3. Traditional Four Post Shelter
4. Colour Bond Fencing
5. Pool Fencing
6. Waste Bin with Hood
7. 2m Park Seat with Armrests
8. Drinking Fountain
9. Visitor Signage
10. Robust Electric Steel BBQ
11. Static Exercise Equipment
12. Road Safety School Facility
13. Kids Climbing Walls

MATERIALS

14. Corten Steel Edging
15. Artificial Turf
16. Green Plants and White Rock Contrast
17. Local Rock Edging between Grass & Gardens
18. Organic & Inorganic Mulches
19. Red Stone in Natural Setting
20. Red Stone Mulch with White Rock Feature
21. Traditional Fencing & Tin Sculptures
22. Traditional Stone Building Materials
23. White Stone Mulch

**BIRDSVILLE LANDSCAPE MASTER PLANNING
Landscape Infrastructure & Materials**





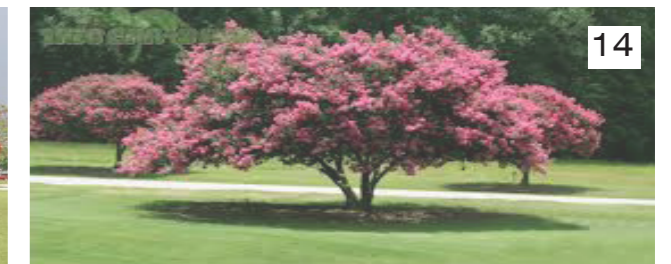
PLANTING STRATEGIES - TREES

Trees Native Or Naturalised To Australia:

1. ACACIA peuce - Waddi Tree
2. ARAUCARIA heteophyla - Norfolk Pine
3. BRACHYCHITON acerifolius - Illawarra flame tree
4. BRACHYCHITON populneus - Kurrajong
5. BRACHYCHITON rupestris - Bottle Tree
6. CASUARINA species - She Oaks
7. CUPANIOPSIS anacardioides – Tuckeroo
8. EUCALYPTUS citriodora - Citrus Gum
9. EUCALYPTUS coolabah - Coolabag Gum
10. MELALEUCA quinquenervia - Paperbark Tree
11. LIVISTONA australis - Cabbage Palm

Exotic Trees & Palms:

12. CAESALPINIA ferrara - Leopard Tree
13. DELONIX regia - Poinciana
14. LAGERSTROEMA indica - Crepe Myrtle
15. TABEBUIA palermai - Pink Trumpet Tree
16. WODYETIA bifurcata - Fox Tail Palm



TOWNSHIP TREES & LOCAL CONTEXT

The community has previously expressed in the 'Birdsville Streetscape Report' 1997 a preference for regional native species as shade trees in street and parks. This report endorses that strategy. Also endorsed is the use of a specific range of native and exotic feature trees in key civic locations including the waddi and coolabahs in Jardine St Park, the cabbage palms in the town hall precinct and proposed iconic 'lone pine' Norfolk's in Anzac park, all of which can be argued to have cultural and amenity values that reflect the wishes and aspirations of the community.

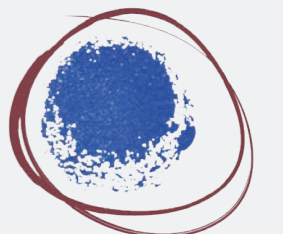
There will always be a wide range of opinion amongst the townsfolk and visitors about what plants are preferred in civic gardens. It is clear that the role of gardens in parks is typically to provide trees for shade, hedges for buffering and colourful / textural accents for visual interest and fun.



The Birdsville Township's streetscapes and any park area not under irrigation are typically undeveloped desert remnants of scattered gums and acacia amongst sand and rock. Drive a little way out of town in any direction and the natural landscapes can be found with complex curvilinear arrangements of the same sand and rock in more aesthetic forms. In these natural landscapes certain plants cluster and survive in harmony with the shapes of the land.

This observation provides validity for a common sense approach to landscaping non irrigated landscapes in this arid place. We describe this simply as 'Desert Style Ecology Landscapes' which have a high level of wildness, are dynamic and reflect the harsh outback environment. These gardens form a strong part of the indigenous people's relationship to country, the desert tourism narrative and the townships sense of remoteness.

**BIRDSVILLE LANDSCAPE MASTER PLANNING
Planting Strategies - Township Trees & Local Context**





PLANTING STRATEGIES - SHRUBS & GROUNDCOVER

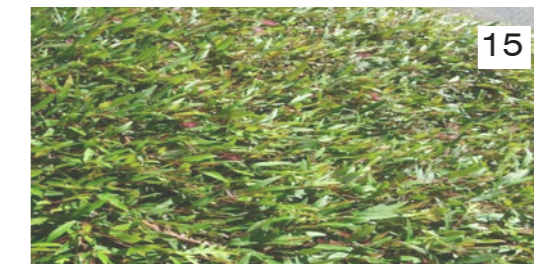
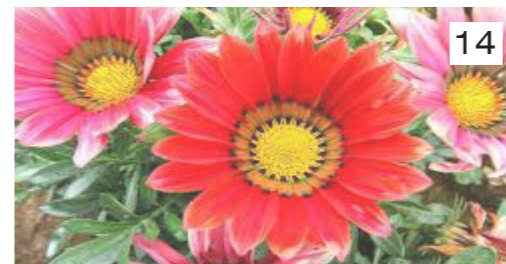
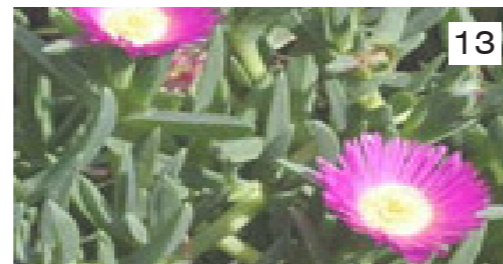
Shrubs - Native and Exotic

1. ACACIA ligulata - Dune Wattle
2. BOUGANVILLEA Species
3. CALLISTEMON citrinus - Little John
4. EREMOPHILA racemosa - Showy
5. EREMOPHILA nivea - Silky Eremophila
6. EREMOPHILA glabra - Silver Ball
7. GREVILLEA - Orange Marmalade
8. LEUCOPHYLLUM frutescens - Lavender Lights
9. MELALEUCA linarifolia - Claret Tops
10. RHAGODIA spinescens - Spiny Saltbush
11. WESTRINGIA fruticosa - Blue Gem



Groundcovers - Native and Exotic

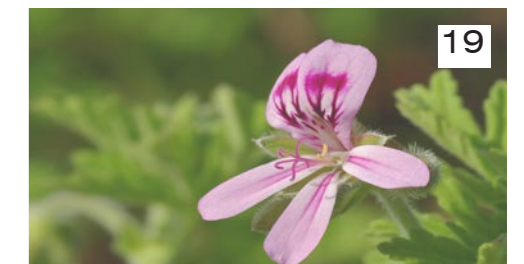
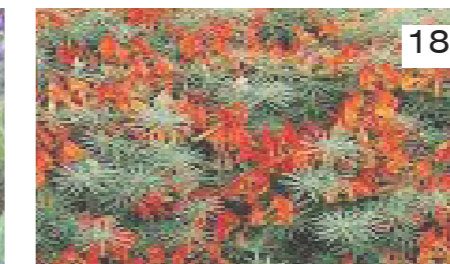
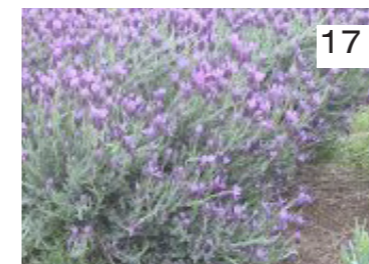
12. ANIGOZANTHOS flavidus - Tall Kangaroo Paw
13. CARPOBROTUS glaucescens - Pig Face
14. GAZANIA rigens - Treasure Flower
15. GREVILLEA - Poorinda Royal Mantle
16. HARDENBERGIA violacea - Bushy Blue
17. LAVENDER stoechas - Spanish Lavender
18. LOTUS berthelotii - Gold Flash
19. PELARGONIUM graveolens - Aromatic geraniums



CIVIC GARDENS

For most travellers and locals coming to town the arrival experience occurs in number of locations and context's including: town's gateways, the servo, the pub, the post office, a rest stop at Anzac Park, a birthday party at Jardine St Park, a production at the Town Hall and the Warrari community hub. For many of these locals and visitors alike, certain key civic gardens in parks and streetscapes provide that sense of arrival into a safe comfortable 'oasis' in the desert.

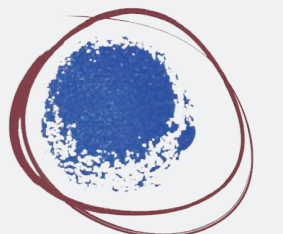
This idea of an 'civic oasis' landscape can be exemplified by many rural homesteads that feature bore fed lawns, ornamental gardens, feature exotic trees and palms, simple practical geometrical layouts as well as simple robust landscape furniture and structures that can be fixed with a saw, a welder or as a last resort a hammer.



However, the practicalities of living in a remote area require the use of many native plants adapted to the conditions particularly where the irrigation water runs out. These dry gardens often blend the structured garden areas into the adjacent 'desert landscapes' and so have a more organic, curvilinear, natural garden layouts, use natural materials and follow ecological principles of species selection.

The Birdsville Township's various landscapes therefore express both forms of these garden styles in streets, parks and open spaces. Always depending on the location, DSC associated cultural values and decisions on levels of available maintenance resourcing. These two iconic Birdsville 'desert ecology' and 'civic oasis' gardens styles will continue to be blended, juxtaposed and generally reflect the whims and expressions of the townsfolk as the town evolves over the next century.

BIRDSVILLE LANDSCAPE MASTER PLANNING Planting Strategies - Civic Gardens



The town hall is now due for a renovation both internally and out. The new streetscape has created a conversation about parking which has then highlighted the need to look at the land as a whole for an equitable and sustainable outcome.
The Site

The Town Hall building was designed and built in the early eighties and sits on an East – West alignment slightly north of the properties center cutting the ‘precinct’ in half. To enable clear planning and design discussions in this report, the precinct is discussed as two sub precincts namely Adelaide street frontage and the Florence Street frontage which are connected by a ‘service corridor’ to the western boundary.

The town hall precinct ‘Site Analysis’ was undertaken to identify site constraints and opportunities particularly with regard to site function and amenity values. The following views describe some of the key issues and provide a point of reference for interpreting this report and master plan proposals.

The following images show the site in May 2019



New Median & footpath with shady gums.



Upgrade to entry required to improve amenity, visual cues and function.



Upgrade Service area function, security amenity.



Informal seating areas upgrade needed.



Opportunity for new hall entry with deck.



Upgrade Commercial lot interface amenity.



Building Services Area.



Building Services Area.



Florence Street Aspect.



Informal service area access track.



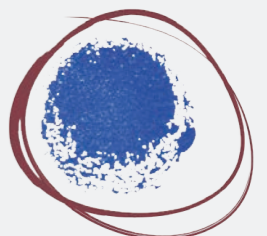
Front area paving has inconsistent levels.



Close off services area from general public.



Building entry needs better definition .



Town Hall | Jardine Park | Anzac Park

The town hall precinct has three logical development stages:

1. The Hall refurbishment – to DSC Architects design and budget
2. Adelaide St frontage and service yard
3. Florence St frontage

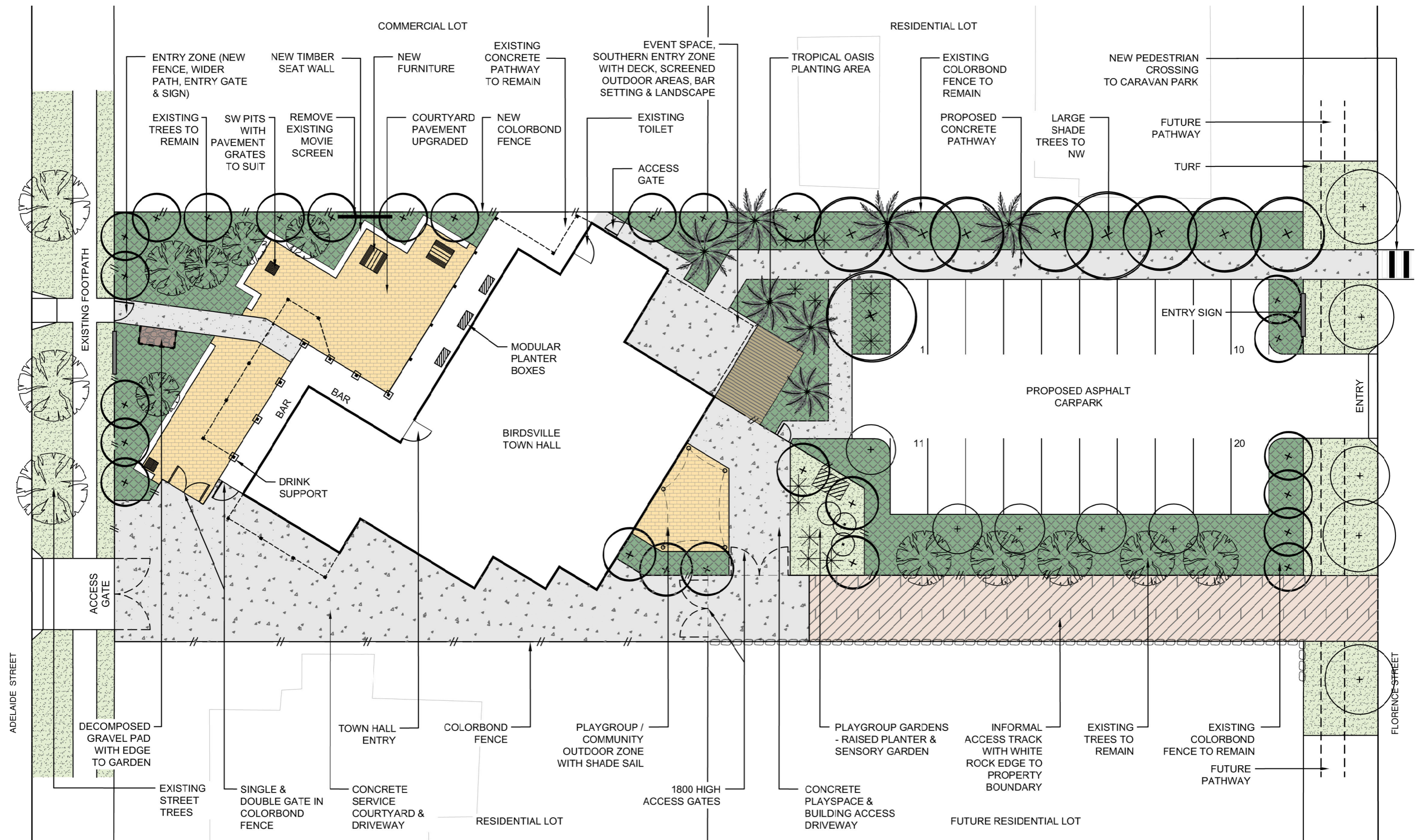
These elements are detailed in the Town Hall Master Plan Cost Schedule dated 27.05.2019

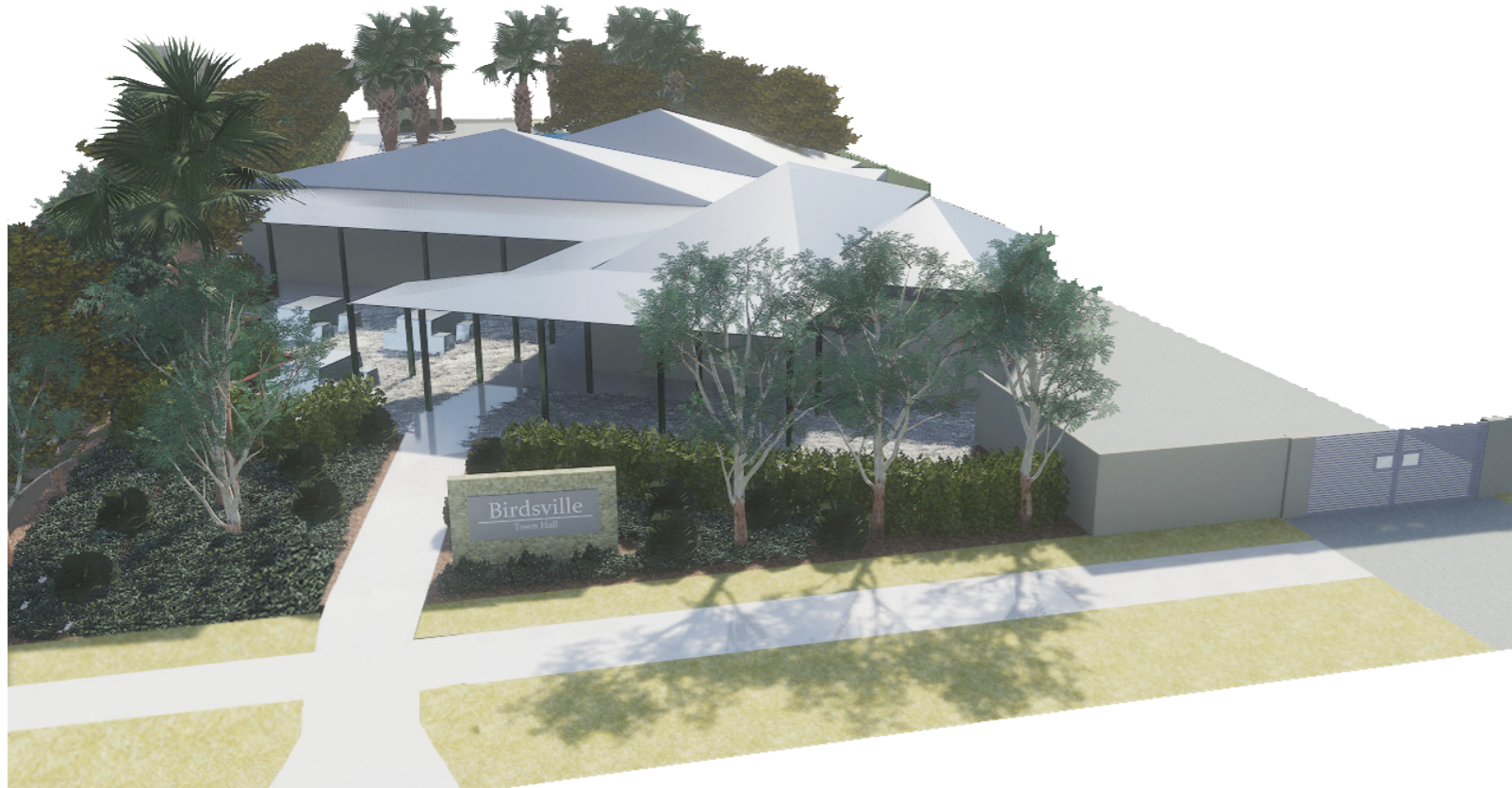
Stage 2 Adelaide St frontage and service yard:

Includes: site works, concrete driveway to services yard, lighting, planters, concrete footpaths and paving, table and bench settings, timber seat wall, sign, fencing, irrigation, gardens and maintenance

Stage 3 Florence St frontage:

Includes: site works, carpark, lighting, concrete footpaths and paving, deck, screens, tap, shade sails, sign, fencing, irrigation, gardens and maintenance





Town Hall - Main Entry



Car Park Entry From Florence Street

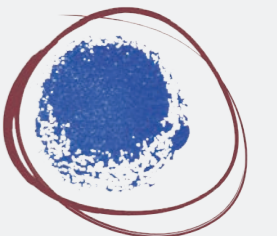


Perspective Plan showing Parking from Florence Street



Community Garden / Play Zone

BIRDSVILLE LANDSCAPE MASTER PLANNING
Town Hall | Artist's Impressions



This park has a partly built shelter, shade structure and playground sited in the new residential area of the town close to new families. It is considered by the community as a small local park however it sits in a much larger open space area which forms part of a township open space network and has plenty of future potential.

The Adelaide Street frontage forms part of the tourist departure and arrival from the western desert environment as well as the Bronco Branding Yard, historic cemetery and proposed Golf Club. Any improvement in the amenity of this open space would enhance visitor experience and tourist potential.

The Jardine Street Park 'Site Analysis' was undertaken to identify site constraints and opportunities particularly with regard to site function and amenity values. The following views describe some of the key issues and provide a point of reference for interpreting this report and master plan proposals.

The following images show the site in May 2019



Jardine Street neighborhood park context .



Playground & shelter under constructio.



House needs garden buffer to Playground.



House needs garden buffer to park shelter.



Iconic Waddi Trees preserved on mounding.



Retain open views to informal path.



Iconic Wadi Trees on mound to Adelaide st.



Main view in can be improved with mounds, dry creek drain lines and scattered trees.

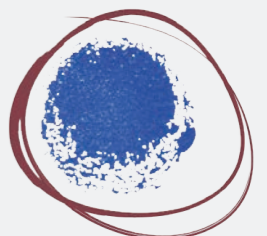


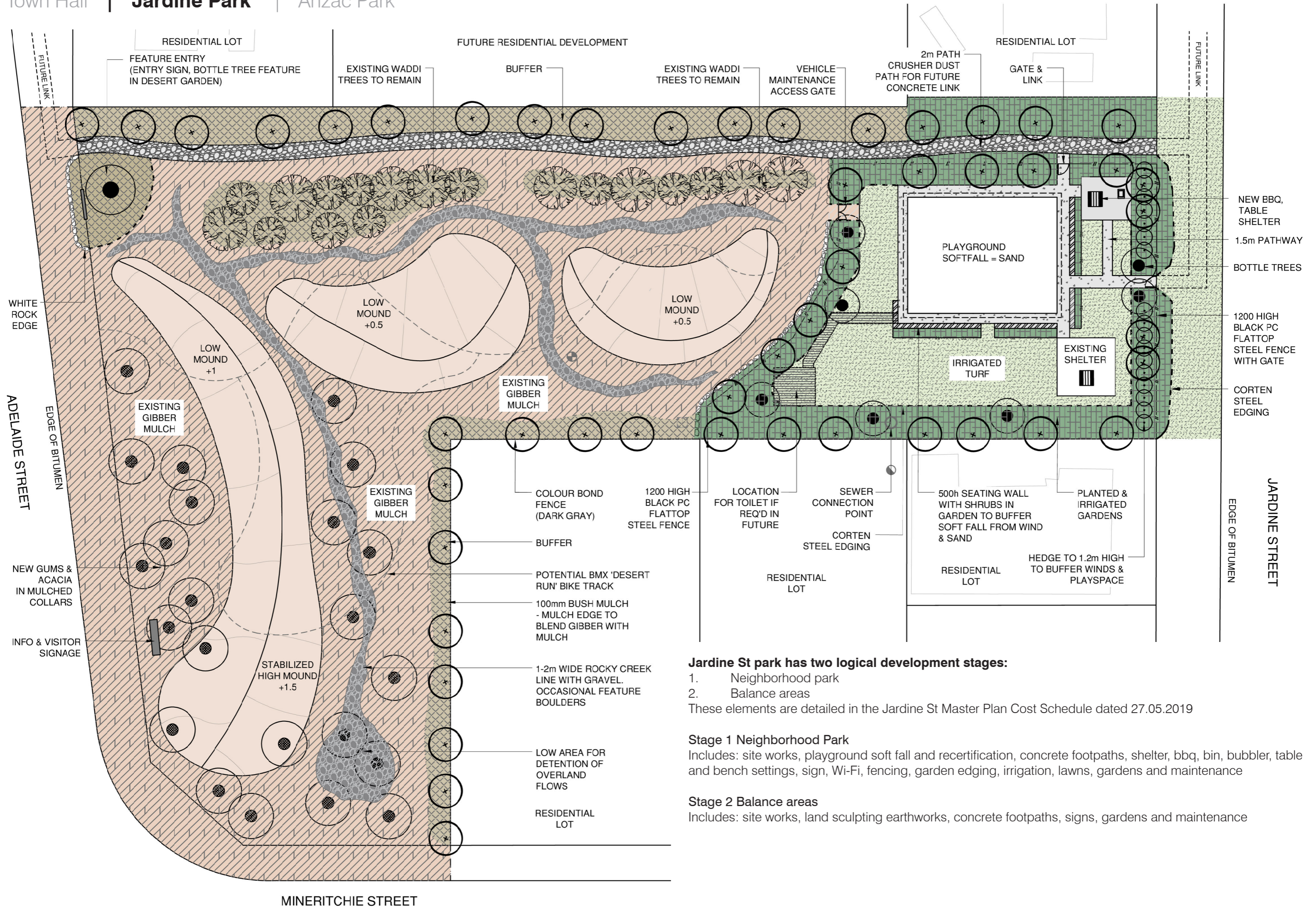
Opportunity for simple, low cost and low maintenance 'Desert Landscape'.



The road to the Simpson, opportunity for first and last tourist impression of Birdsville.

BIRDSVILLE LANDSCAPE MASTER PLANNING
Jardine Street | Existing Photos





Jardine St park has two logical development stages:

1. Neighborhood park
2. Balance areas

These elements are detailed in the Jardine St Master Plan Cost Schedule dated 27.05.2019

Stage 1 Neighborhood Park

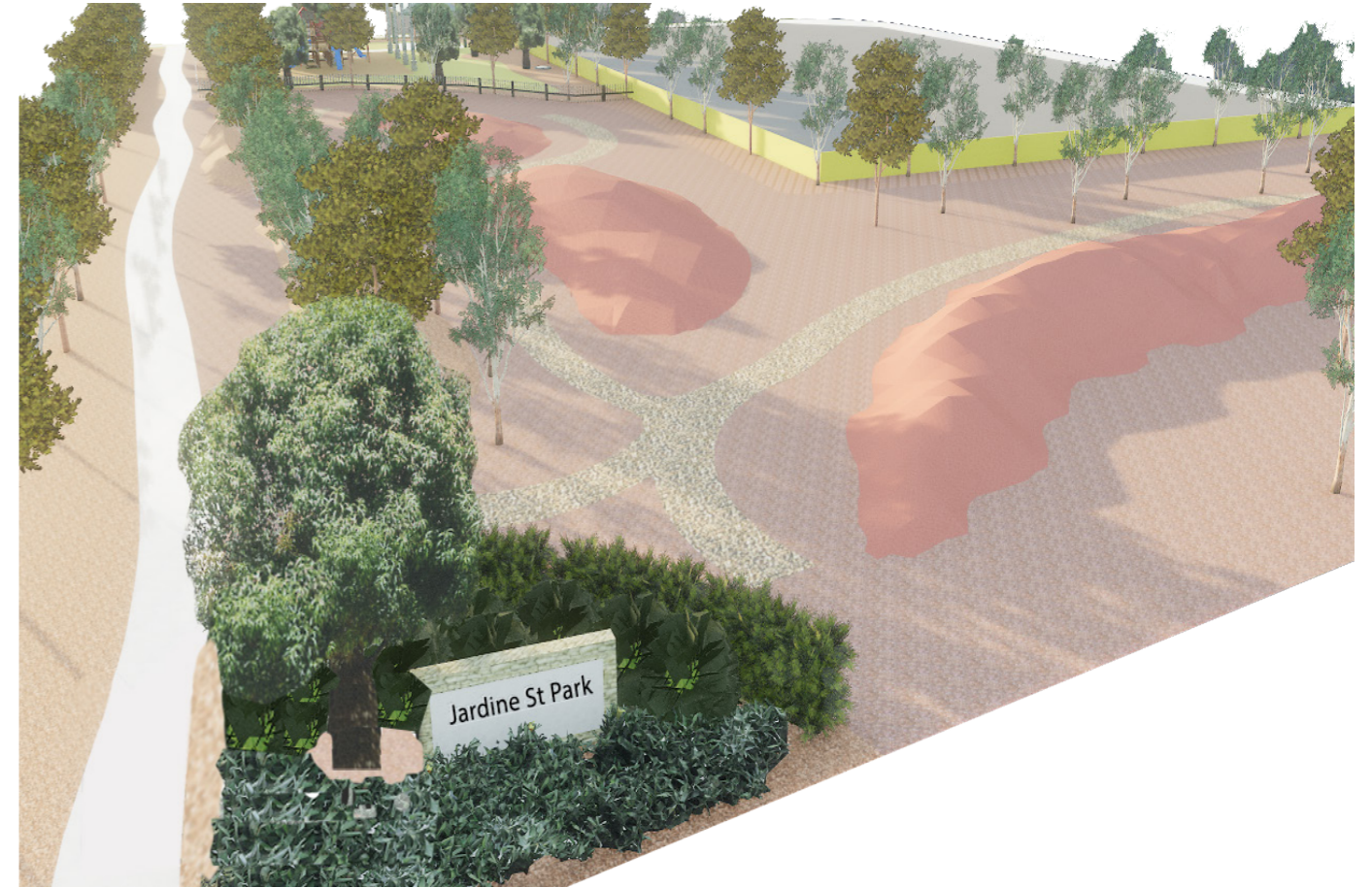
Includes: site works, playground soft fall and recertification, concrete footpaths, shelter, bbq, bin, bubbler, table and bench settings, sign, Wi-Fi, fencing, garden edging, irrigation, lawns, gardens and maintenance

Stage 2 Balance areas

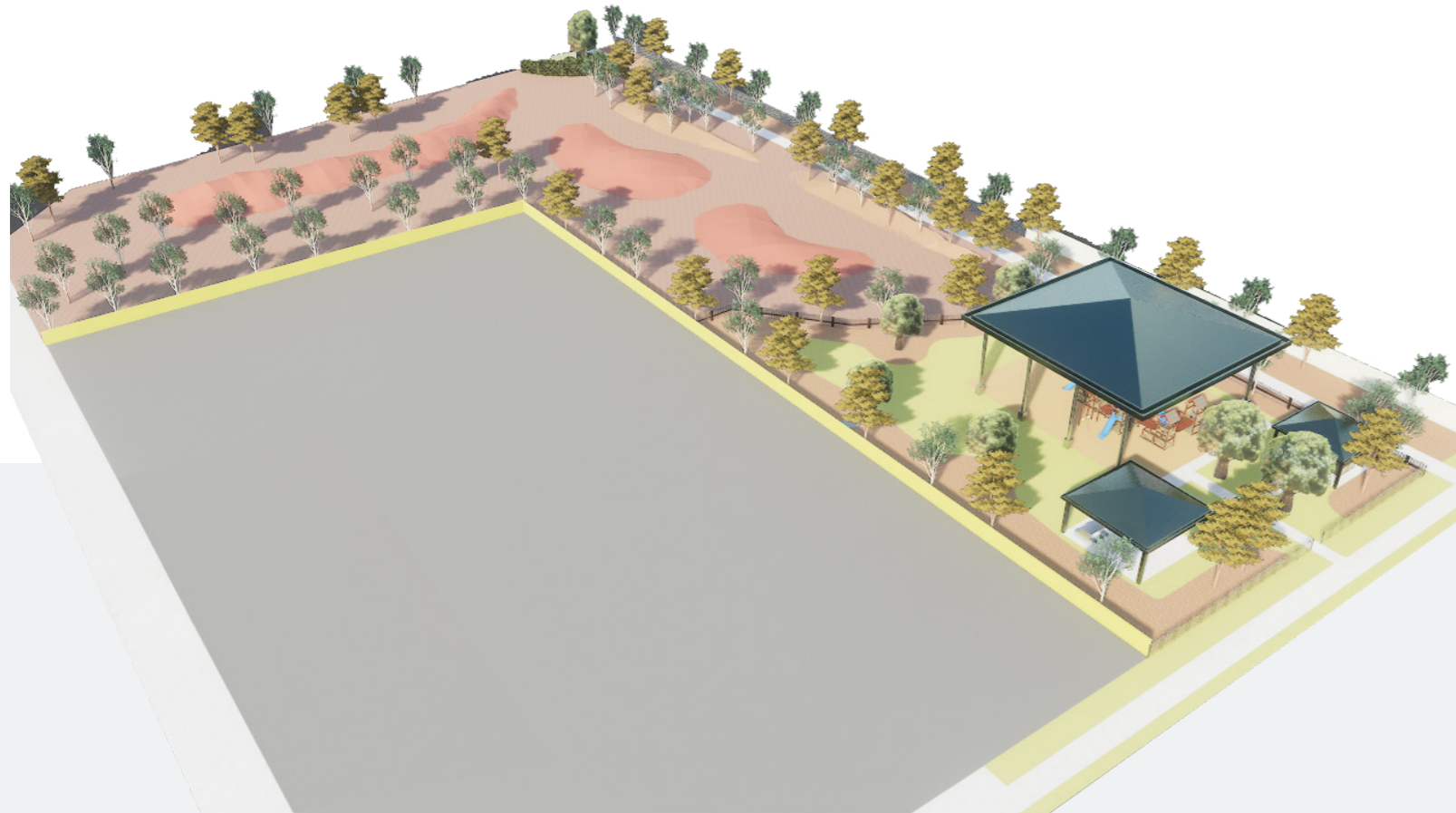
Includes: site works, land sculpting earthworks, concrete footpaths, signs, gardens and maintenance



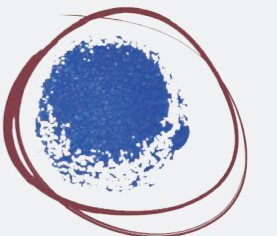
Jardine Street Park - Main Entry to play ground



Perspective of Entry From Adelaide Street



Perspective Plan showing overall site



Valued as a place that celebrates pioneering and ANZAC heritage the park functions as an excellent attraction for tourists whilst providing locals with a 'town center' park with facilities.

In recent years the first stages of its development into a significant tourist and local park has occurred. Parts of the park have been transformed into an irrigated shady green oasis with a range of facilities including toilets, tap, bubbler, BBQ, shaded picnic settings and historical information signage.

The Anzac Park 'Site Analysis' was undertaken to identify site constraints and opportunities particularly with regard to site function and amenity values. The following views describe some of the key issues and provide a point of reference for interpreting this report and master plan proposals.

The following images show the site in May 2019



Anzac day 2019.



Crowd observing from shaded area.



Street closure for parade from Pub to Anzac Park, a local tradition.



Facilities used for dawn service.



Footpath and road used for ceremonies.



Service Memorials, statuary and flag pole.



Playground needs soft fall and revised garden layouts to meet safety standards.



New shelter in formal park setting.



Space for park infrastructure.



Path network not to standard widths.



View from basketball hoop slab showing informal use of park by locals.

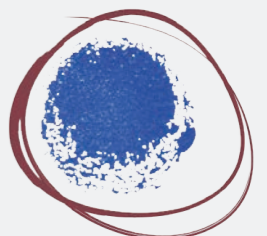


View of undeveloped park area and shelter near the end of its functional life



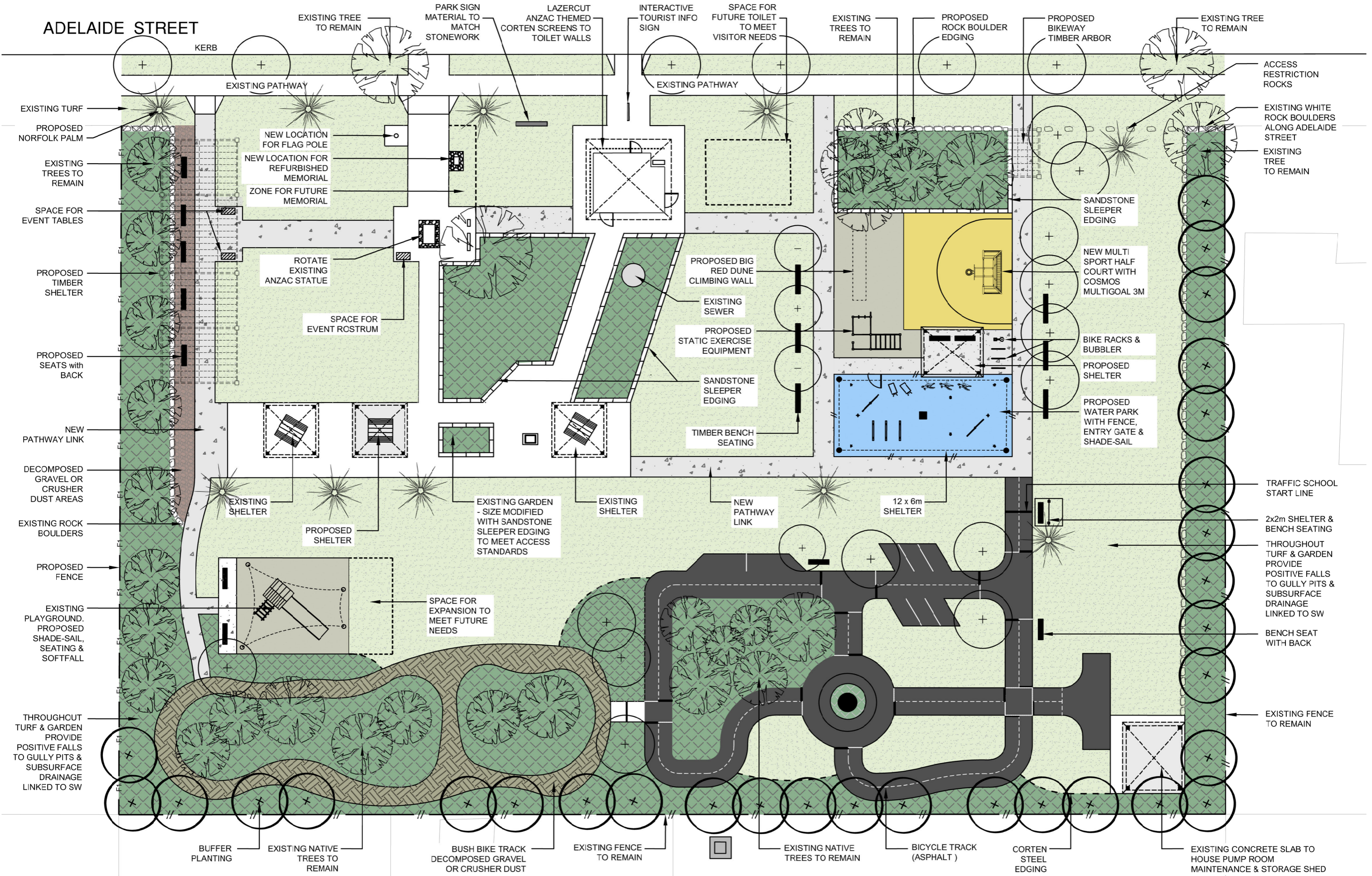
Existing white rock boulder

BIRDSVILLE LANDSCAPE MASTER PLANNING
ANZAC Park | Existing Photos



Anzac Park has three logical development stages

1. Anzac and Historical area
2. Traffic School, under 10's BMX track and Playground area
3. Water play and hardcourt area





ANZAC park entry - Showing Toilet Block & Memorial Area



Perspective showing bike track and Water Park



Perspective Looking Back To Entry Zone



Water Park and MultiSport Court

BIRDSVILLE LANDSCAPE MASTER PLANNING
ANZAC Park | Artist's Impressions

